

# 2017 Sunseeker by Forest River MBS Series M-2400W Mercedes Sprinter

## Sunseeker by Forest River

MOTORHOMES - Air conditioner, generator, microwave, Arctic Package, exterior accessory package, bathroom roof vent and DSI water heater are included in price.

## 2017 Note

In addition to standard equipment, Sunseeker prices include Premium Camping Package.

## Values

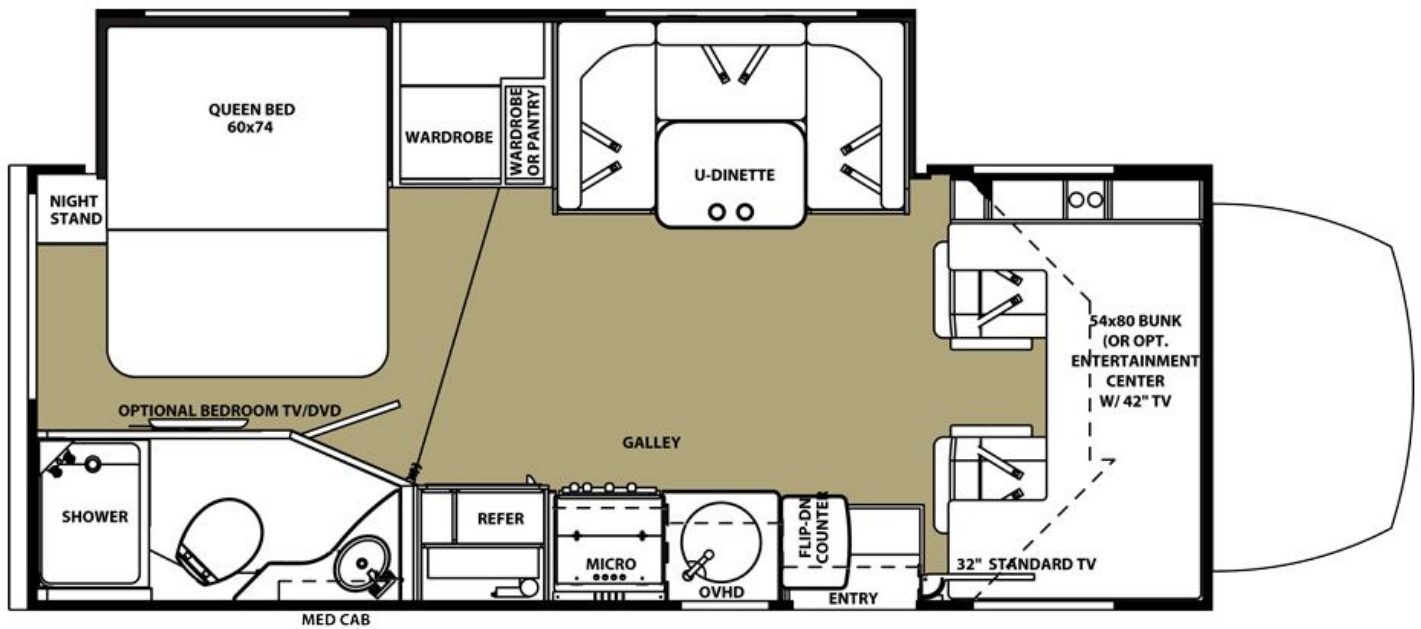
	Suggested List Price	Average Retail
<b>Base Price</b>	<b>\$106,118</b>	
Gas Grill Cook Top		\$925
Microwave/Convection Combo		\$325
Microwave/Hood Combo		\$415
Helwig Anti-sway package		\$820
15"-20" Flat Screen TV		\$145
27"-32" Flat Screen TV		\$170
37"-40" Flat Screen TV		\$365
DVD Player		\$290
Hydraulic Leveling System (Stabilizing Jacks)		\$1,660

Cruise Control	\$105
Electric Step (Single)	\$175
Exterior Entertainment Center	\$730
Fiberglass Exterior 30' and Under	\$1,480
Full Body Paint	\$5,590
Invisible Bra	\$920
Luggage Rack and Ladder	\$115
Manual Roman Shades	\$995
Multiplex Lighting	\$600
Rear Vision Camera/Monitor	\$1,050
Side View Camera	\$210
Skylight	\$200
Spare Tire and Carrier	\$130
Tilt Wheel	\$105
Trailer Hitch	\$120
Vinyl Graphics	\$1,780
Power Awning 16-21' (Each)	\$490
Aluminum RV Wheels (Set of 4) & Full-size spare tire	\$1,375
50 Amp Service	\$160

Inverter (600 Watt)	\$375
Power Slide-Out Room 16' (Each)	\$4,275
Outdoor Mat 12x9'	\$100
Fire Pit Grate	\$40
Electrical Cord and Adaptors	\$100
Leveling Blocks	\$150
<b>Total Listed Price</b>	<b>\$93,085</b>







**2016**



## **SPRINTER** Cab Chassis



### **6-Cylinder BlueTEC Turbocharged Diesel Engine**

*Optional*

Offering 325 lb-ft of turbocharged torque across a broad rpm range, the 6-cylinder diesel engine/5-speed automatic transmission option delivers greater horsepower. With peak torque coming in at a low rpm, the V6 engine gives you ample pulling power when the light turns green, when merging onto a highway, and especially under a load - precisely when it matters most.



**3500** Standard Roof 170" Wheelbase

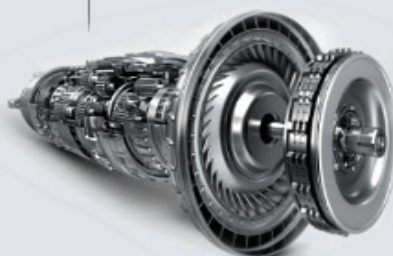
Gross Vehicle Weight  
Rating:

**11,030 lbs**

Maximum Towing  
Capacity:

**7,500 lbs**

**BLUE EFFICIENCY**



### **7-speed Automatic 7G-TRONIC Transmission**

*Standard*

Refined for maximum efficiency, a quick-shifting 7-speed automatic transmission delivers lower fuel consumption, reduced noise, and longer service life.