

2VANISH



Key Information

- 2010 Ford E-350 extended van, 6.8L V10 gasoline engine with 4-wheel drive.
- 2011 Sportsmobile build, "50 Plan" with Voyager hard top, modified cabinets, and numerous add-ons.
- 47,000 miles, no accidents, meticulously maintained (records available).
- GVWR about 12,000 lbs.
- 22" long, including rear bumper attachments, 9'6" high including roof rack, and 7' wide. Interior height is 72".
- Seats 5, sleeps 2.

Feature Summary

This van is fully outfitted for offroad adventure, safety, and comfort, starting with a lift that raises the floor to 37" off the ground plus full-float axle and Atlas transfer case. Front and rear axles can be controlled independently, and the transfer case allows front or rear 2WD, 4WD High, or 4WD Low (3X gear reduction). The front hubs have manual ARB lockers, with a tool to facilitate turning.

Tires can air down to ~30 psi for better handling through soft sand, washboard trails and challenging terrain. To air back up to the normal 65 & 80 psi, there is a frame-mounted Extreme Air Magnum 150 continuous psi compressor with air chucks in both bumpers. The 1-gallon air storage tank also powers the VERY LOUD train horn, a useful safety feature.

An Aluminess roof rack holds 520 watts of solar panels which keep two 4D batteries (stored beneath the floor) charged to their 440 amp-hour (5.3 KWHrs) capacity – more than enough to run the 2.3 cubic foot Isotherm refrigerator and use the microwave even while boondocking in hot weather. Power is supplied via a Xantrex 2000-watt true sinewave inverter/battery charger. Power is accessible via 4 exterior and 8 interior AC plugs, 1 exterior and 4 interior 12-volt plugs, and 3 interior USB plugs. System is monitored via a Bluesky Solar Charge Controller 3024iL, and a Solarboost power monitor for voltage, current, power, and energy. A jump switch can momentarily connect engine battery to house batteries.

Aluminess bumpers hold a 12,000-pound Warn winch in front, and a 9,500-pound winch, a spare tire, and a large storage box on the rear. Four Maxtrax recovery boards are mounted on the roof rack, and a Hi-Lift jack is stored onboard. Safety in the dark is ensured by high power LED lights on the roof rack front and sides, and on the front and rear bumpers.

Inside, driver and passenger captains' seats are heated, and the passenger seat swivels 180 degrees to face the rear. The rear seat carries three passengers, and folds down to form an Olympic Queen size bed. The walls are insulated, and climate can be enhanced with a ceiling fan. Interior amenities include 10 LED light fixtures, very large storage shelves with cargo nets and 10 cabinets (two with locks). Removeable carpet sits on rugged Loncoin diamond plate floor. Custom Line-x coated floor mats and heat shields for the "doghouse" reduce engine heat in the cabin. Windows have screens, dual shades, and black-out curtains, as well as interior sunshades for the windshield, driver and passenger windows, and exterior front sunshade. There are mosquito nets for the two front windows and side swing-out doors. A custom window insert fits a Zero Breeze portable AC unit.

Radio communication is enabled via an ICOM IC-706 MKIIG 100W HF, 50W VHF, 35W UHF transceiver above the dash with a fixed HF antenna with antenna tuner on the rear driver side and a 2 position (raised/lowered) Diamond VHF/UHF SG7500A antenna on the roof rack over the driver. This radio is programmed for weather, wilderness emergency, and many other channels and requires an amateur license for any transmissions. The radio has a MARS modification.

Additional communication and safety features include a Garmin Inreach Explorer+ Satellite communicator for emergency use, satellite/cell network location-tracking device, alarm with two key fob remotes, a public address system and 50W siren with engine bay heavy duty speaker, OBDII monitor/display over steering wheel and DVR mounted on windshield center top.

Total fuel capacity is 46 gallons for a range of over 350 miles. The built-in freshwater tank holds 16 gallons, along with a 16-gallon 36x10x12 removeable, custom freshwater tank with 12-volt transfer pump, and flat plate hot water heater. The kitchen faucet extends for use as a shower, and there is another shower attachment at the back of the van. There is a 10-gallon grey water tank, and a discrete cabinet holds a portable toilet with a 5-gallon removeable tank.

Photos



Exterior Passenger Side, Line-x rocker panels, and Bushwacker flares.



Exterior Passenger Side, doors open, showing heavy duty steps to access 37"H interior.



Aluminess roof rack with 520 watts solar panels, four Maxtrax recovery boards, and ceiling fan



Exterior Front with HID-upgraded Ford headlights, front bumper winch, and other supplemental lights.



Aluminess front bumper with offroad lights, and roof rack with ultra-bright long distance light bar and directable spotlights.



Front camera, and covered winch hatch.



Front hatch with 12,000-pound Warn Winch with Dyneema cable, shovel, and Hi-Lift jack handle.



HAM radio antenna in raised and lowered positions (controlled by internal driver overhead switch).



Spare tire mounted on driver rear bumper swingarm, lock pin secured.



Rear passenger swing arm lockable bumper box, lock pin secured, interior 23.75"Wx29.5"Hx16"D with rear view camera.



Rear hitch trailer ball & step, robust box & wheel latches, rear winch fairlead, winch & storage box with 5 screw knobs.



Rear 9,500-pound Warn winch with Dyneema cable.



35" Nitto Terra Grappler G2 295/70R18 off-road tires all around, plus spare. (Right front wheel suspension shown).



Right rear wheel suspension.

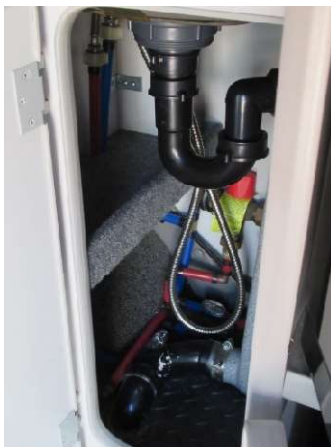




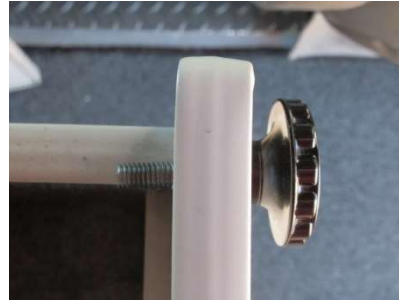
Fiamma F45Ti Titanium awning, 9'3" wide x 8' long, with two adjustable support legs that can be attached to van or rest on the ground, in excellent condition.



Door-mounted galley box, kitchen area with two-tier storage shelves, LED lights, heat reflective panel.



Sink with adjacent 20"Wx21"D work surface, under sink storage, and extra-long faucet hose.



Extra-large drawer, 22"Wx21"Dx10"H, with reinforced latches, topped by a 26"Wx24"D work surface.



Isotherm "Drawer 65" 2.3 cubic foot 12-volt refrigerator with freezer compartment



Sharp Microwave SMC0710BW, 10" carousel, 700W, 0.7 CF; Thetford portable toilet with 5-gallon tank



Locking storage cabinet, and slim compartment for maps/laptop behind driver seat.



Passenger swing-out door with storage compartment and fold-down table.



Galley box with two fold-down tables; storage compartment in door.



New custom carpet over Loncoin heavy-duty vinyl, swivel front passenger seat with deep storage pocket and fire extinguisher.



Passenger seat with 3 seat belts.





Olympic Queen bed, 67"W x 79"L, with custom memory foam topper.



Underseat storage, water pump with switched intake/output connections for miscellaneous use. 12-volt plug, relay breaker, AC outlets, current meter for inverter, attachment points for cargo.



Supplemental solar panel controller and monitor, plus smoke alarm.



Garmin Inreach Explorer+ Satellite communicator (subscription required), 2000-watt inverter and 16-gallon water tank behind rear passenger seat.



Inverter control panel and solar controller.





Interior rear storage: main compartment 40"Wx55"Dx13"H, and side cabinets 14"Wx36"Dx12"H.



Rear under-floor lockable storage pit, 31x28x13.



Rear shower outlet and AC fuse panel.

Ten interior storage cabinets:



Lower cabinets.



Upper cabinets.



Wheel well storage area below cushion, accessible from interior.



Lockable storage over front seats, 57x25x18, wedge shape. Insulated ceiling, with overhead air vent fan with cover, rain detecting.



Storage nets on both sides and rear.



Side rear passenger and driver rear windows open.



Line-X covered floor mats, driver and passenger sides, custom-made heat shields for doghouse.



Kenwood head unit with navigation, altitude, distance, Sirius XM, off-air radio, USB port, Bluetooth for calls & phone music. Displays front and rear cameras on demand, with 5-speaker audio.

Left-right levelling gauge (front-back level gauge not shown).



Front view camera and rear-view camera.



Controls and air tank gauge.



Custom cockpit controls for lights, lockers, and air compressor. Radio, PA, map light, and storage nook above passenger visor are shown.



ICOM IC-706 MKIIG Amateur Radio, controller over driver, body behind driver. 100-watt HF, 50 VHF, 35 UHF. MARS modification. Fixed HF antenna on rear driver side, HF AH-180 HF antenna tuner. Diamond VHF/UHF antenna SG7500A, Up/Down switch above driver. P.A. and radio microphones can be used over Driver or from dash connectors.



Primary fuse box and ICOM 706 MKII 2G HAM radio body (full MARS modification)



Views of fuse panel, including radio speaker and main radio body.

VAN DORA PART 1 OF 2

2010 DEALER ORDER RECEIPT ACKNOWLEDGEMENT-FD

PAGE 3

ALTER-ORDER ** DEALER SUBMITTED **
 71B102 KEN GRODY FORD - CAR
 BODY S3E BEGIN ORD X014 # UNITS 001
 SPEC ORD# ORDER TYPE 1
 DORA PROCESSED 05/03/10 PM
 ORDER RCPT DATE 05/01/10 SCHD / /
 ASSEMBLY PLANT VIN # TSS3ES A

05/03/10
 PRIORITY 10

THIS IS NOT AN INVOICE. IT PROVIDES TENTATIVE
 PRICE INFORMATION THAT WOULD APPLY IF THE
 VEHICLE IS PRODUCED TO THE SPECIFICATIONS
 SHOWN. PRICES ARE SUBJECT TO CHANGE WITHOUT NOTICE.

71B102
 S3E
 X014
 10 FLT-

THIS ORDER IS CONDITIONED UPON FINAL PRICE LEVEL
 CERTIFICATION OF THE VEHICLE. 055

E350 SUPER DUTY CARGO VAN	30,340.00	27,961.00
138 INCH WHEELBASE		
UX INGOT SILVER METALLIC	135.00	112.00
M CLOTH CAPTAINS CHAIRS	NC	NC
E MEDIUM FLINT		
PREFERRED EQUIPMENT PKG.760A		
.STANDARD TRIM		
60H .HINGED 60/40 SIDE DOORS		
614 .16" SPORT WHEEL COVER		
.LESS AIRBAG SWITCH		
572 .AIR COND FRT ONLY-CFC FREE		
642 .16" STEEL WHEEL - SRW		
99S 6.8L EFI V10 ENGINE	800.00	664.00
44T ELEC 5-SPD AOD W/TOW-HAUL	385.00	320.00
T38 .LT245/75RX16E BSW ALL-SEASON		
XC2 4.10 LIMITED SLIP AXLE XC2	315.00	261.00
18A HIGH-SERIES EXT UPGRADE PKG	415.00	344.00
.CHROME BUMPERS		
18B INTERIOR UPGRADE PACKAGE-VAN	1,725.00	1,432.00
.POWER GROUP		
.REMOTE KEYLESS ENT/PANIC ALARM		
.CAPTAIN'S CHAIRS DUAL		
.CARPETED FLR COVERING, FRONT		
.CARPET, REAR		
.CARPETED THROW-IN FLOOR MATS		
.INSULATION PACKAGE		
CA NEW MTR VEHICLE BOARD FEES	NC	.65
153 FRONT LICENSE PLATE BRACKET	NC	NC
179 GLASS,SWNG-OUT SD/FIX RR CARGO	185.00	154.00
20N 9500# GVWR PACKAGE	NC	NC
425 50 STATE EMISSIONS	NC	NC

VAN DORA PART 2 OF 2

47Z AMBULANCE PREP PACKAGE NOT REQ		
52S USER DEFINED SWITCHES	85.00	71.00
52S SPEED CONTROL	240.00	199.00
536 TRLR TOW PKG CLASS II/III/IV	285.00	237.00
54E MIRRORS,MAN TLR TOW W/PWR GLS	NC	NC
58S PREM ELEC AMFM STEREO CLOCK/CD	295.00	245.00
60J INSTRUMENT PANEL ELEC MESSAGE	190.00	158.00
62S INSIDE REARVIEW MIRROR	NC	NC
63G EXTRA HEAVY DUTY 78AMP BATTERY	50.00	42.00
63N EXTRA HVY DUTY 225-AMP ALT	260.00	216.00
874 4 SPEAKERS		
90P POWER DRIVER SEAT ADJUSTER	390.00	324.00
NOT FOR AMBULANCE USE. USING THIS VEHICLE TO PRODUCE AN AMBULANCE VOIDS FORD WARRANTY.		

TOTAL BEFORE D&D AND DISCOUNTS	36,095.00	32,740.65
DESTINATION & DELIVERY	980.00	980.00
SUB TOTAL	37,075.00	33,720.65
TOTAL OPTIONS	5,755.00	4,779.65

FUEL CHARGE		99.75
PRICED DORA	NC	NC
FDAF ASSESSMENT		458.00

TOTAL	37,075.00	34,278.40
-------	-----------	-----------

--CHANGES TO ORDER -- PEP/ORDER CODE-- 760A

ADDS: * DENOTES PROCESSED

425	C09	XC2	18A
18B	179	52S	525 536
54E	58S	60J	63G 63N
90P	47Z		

COMPAT/HOLDS/INFO

INFO 764 CHROME BUMPER ADDED--INCLD W/EXT UPGRADE

PKG (18A) WITH COMMERCIAL VANS MAY UPGRADE TO 768

CHROME REAR STEP BUMPER

INFO: 62S INSIDE RRWV MIRROR ADDED-INCL WITH

BACK GLASS 173, 179, 178, 17W, 17S

----- SHIP TO DEALER -----

SHDL*F88WT89SPORTSMOBILE WEST FRESNO

CA

***** END OF DORA *****

SPORTSMOBILE INVOICE

Order No 1068
 6.8L V-10
 Printed 02/09/11

Work Order
 Order Date
 Projected Production Date 08/18/10
 Est Production Time 12 Weeks
 Fabric Ford pattern velour grey
 Silver Ford EB

Salesman A Feld

Deposits \$500.00 As Of: 5/24/2010

Item	Description	Qty	Price	Amount
Standard Plans				
30039.1	Ford - EB-50	1	\$22,075.00	\$22,075.00
30039-01	50 Series-Grey Color Scheme	1	Included	\$0.00

Furnishing

49997	Cabinets below upper cabinets	1	\$240.00 *	\$240.00
49997	Locking galley door	1	\$24.00 *	\$24.00
49997	Cover captain seats in Velour pattern	1	\$628.00 *	\$628.00

Additional Cost

49997	Custom wiring items and install	1	\$960.00 *	\$960.00
-------	---------------------------------	---	------------	----------

Exchange

40006-01	Carpet Overlay Grey Color Scheme	1	\$163.00	\$163.00
40015	Fresh Water Tank 16G	1	\$49.00	\$49.00
40016	Refrigerator A	1	Included	\$0.00
40155	Lonplate Flooring (Diamondplate)	1	\$393.00	\$393.00
40168	New Style Galley w/frg. Drawer	1	\$454.00	\$454.00
40201	Solid Surface Countertop	1	\$0.00 *	\$0.00

Delete

40019	Delete Propane Stove	1	(\$409.00)	(\$409.00)
40020	Delete Propane Tank System	1	(\$843.00)	(\$843.00)

A/C - Heat

40021	A/C 12V	1	\$1,435.00	\$1,435.00
40024	Windshield/Cab Screen	1	\$148.00	\$148.00
40026	Window Tint Ea	9	\$65.00 *	\$585.00

Bath

40030	Porta Potti	1	\$188.00	\$188.00
40037	Porta Shower	1	\$286.00	\$286.00
40038	Exterior Shower	1	\$331.00	\$331.00
40152	Flat Plate	1	\$1,115.00	\$1,115.00

Interior

40045	Privacy Curtain	1	\$87.00	\$87.00
40046.1	XL Storage-EB	1	\$1,045.00	\$1,045.00
40047	Safety Mirror	1	\$269.00	\$269.00
40048	Capt Seat Adj Lumbar Ea	2	\$78.00	\$156.00
40149	Seat Heater	2	\$209.00	\$418.00
40208-02	Swivel Passenger Seat - Ford	1	\$296.00	\$296.00
40295	XL Storage Locking Lid	1	\$135.00	\$135.00
49997	Snap in curtains on 6 lower windows	1	\$344.00	\$344.00
49997	Storage pockets	1	\$120.00	\$120.00

Electrical/Electronic

40051	AGM 4D Battery	1	\$0.00 *	\$0.00
40051.1	AGM 4D Battery - Additional	1	\$887.00	\$887.00
40053	Solar Panel- Kyocera	1	\$1,312.00	\$1,312.00
40054	Addl. Kyocera Panels Ea	1	\$950.00	\$950.00
40057	Inverter 2000 w/ Xantrex	1	\$2,284.00	\$2,284.00
40059	Microwave	1	\$232.00	\$232.00
40292	12v outlet in rear bumper	1	\$77.00 *	\$77.00

Wednesday, February 09, 2011

Page 1 of 3

Order No 1068
 6.8L V-10
 Printed 02/09/11

Work Order
 Order Date
 Projected Production Date 08/18/10
 Est Production Time 12 Weeks
 Fabric Ford pattern velour grey
 Silver Ford EB

Salesman A Feld
 Deposits \$500.00 As Of: 5/24/2010

Item	Description	Qty	Price	Amount
Exterior				
40065	110 V Outlet, Exterior	2	\$77.00	\$154.00 <u>on switches</u>
40070	Awning, Black Case, Grey	1	\$1,144.00	\$1,144.00 <u>van body mounts</u>
49997	Line-X rocker panel black <u>Custom Product</u>	1	\$947.00	\$947.00
Tops				
40093	Voyager FORD EB	1	\$5,607.00	\$5,607.00
Top Options				
40103	Windows Sides Ea	2	\$327.00	\$654.00
40104	Curtains Ea	2	\$55.00	\$110.00
40107	Attic Fan Deluxe	1	\$304.00	\$304.00
40108	Side Compt L or R Side 2'	2	\$143.00	\$286.00
Options A				
40112	Trojan Front Bumper	1	\$2,539.00 *	\$2,539.00
40115	Trojan Rear With Galley Box	1	\$3,842.00 *	\$3,842.00
40118	Hoop Step, Black	3	\$177.00	\$531.00
40123	Hella, Rally 4000	1	\$498.00	\$498.00
40125	Hella, 500 Fog lights	1	\$304.00	\$304.00
40126	Hella, Backup lights	1	\$304.00	\$304.00
40129	Hellwig Rear Sway Bar	1	\$565.00	\$565.00
40131	Warn Winch, M12,000	1	\$1,924.00	\$1,924.00
40139	Bushwacker Flares (4)	1	\$535.00	\$535.00
40140	Extreme Air Magnum	1	\$1,348.00 *	\$1,348.00
40280	Black Ford grill	1	\$350.00 *	\$350.00
40283	Installation	1	\$240.00 *	\$240.00 <u>Go Light Installation</u>
40294	IPN Pro Remote	1	\$457.00 *	\$457.00
49997	Air Horn <u>Custom Product</u>	1	\$374.00	\$374.00
49997	Additional air chuck <u>Custom Product</u>	1	\$160.00 *	\$160.00
49997	Aluminess Rack <u>Custom Product</u>	1	\$13,886.00	\$13,886.00
49997	Expedition Kit <u>Custom Product</u>	1	\$190.00	\$190.00
49997	Pewag chains <u>Custom Product</u>	1	\$260.00	\$260.00
Subtotal				\$73,947.00

Options B

40141	ARB Front	1	\$1,850.00	\$1,850.00
40144	Custom Audio/Video	1	\$6,950.00 *	\$6,950.00
40145	Ford 4x4 SMB	1	\$16,700.00	\$16,700.00
40147	CA Charges	1	\$350.00	\$350.00
40174	Dynatrac Full Floating Axle	1	\$4,220.00	\$4,220.00
49997	Dynaloc Hubs <u>Custom Product</u>	1	\$489.00	\$489.00
49998	Custom Wheels	1	\$2,985.00 *	\$2,985.00 <u>18"x 10" Molave</u>
49999	Custom Tires	1	\$0.00	\$0.00 <u>Nitto 295 70 R18</u>
Subtotal				\$33,544.00

Order No 1068

Work Order 6.8L V-10

Order Date Printed 02/09/11

Projected Production Date 08/18/10

Est Production Time 12 Weeks

Fabric Ford pattern velour grey

Silver Ford EB

Salesman A Feld

Deposits \$500.00 As Of: 5/24/2010

Item	Description	Qty	Price	Amount
SPORTSMOBILE TOTAL				\$107,491.00
Van Selected	SPRUNK Silver Ford EB			\$0.00
Gross Total				\$107,491.00
Tax				TBD
License And Document Fee				TBD
Grand Total Excluding Tax, Licence and Document				\$107,491.00

Notes install heat shield over galley for portable stoves

all inverter and solar controls on passenger side

Customer Signature _____ Date ____/____/____

I agree to the financing terms and if Initialed below, do authorize deposits to be applied to any work that I authorize to proceed prior to completion of financing arrangements and hereby acknowledge that those deposits will become payment for said work authorized in advance.

Wednesday, February 09, 2011

Page 3 of 3